



# President's Quarterly Report

April – June 2023

Addendum as of 30 June 2023

## Building National Resilience

### Government staff/officials trained/sensitised

40%  
female



40%  
male

[20% unreported]

**2,570** government staff/officials trained or sensitised in ODL, OER, TEL, GE or COL models

target: **1,060**

**Exceeded**

### Support for national policies/ strategy development



**28** policy/strategy developed

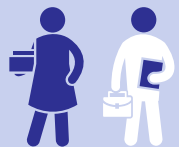
target: **38**

**74%**

## Strengthening Institutions

### Institutional staff trained

40%  
female



43%  
male

[17% unreported]

**8,111** staff/faculty/trainers trained in ODL, OER, TEL, GE, or COL models

target: **7,428**

**Exceeded**

### Institutional policies/strategies developed

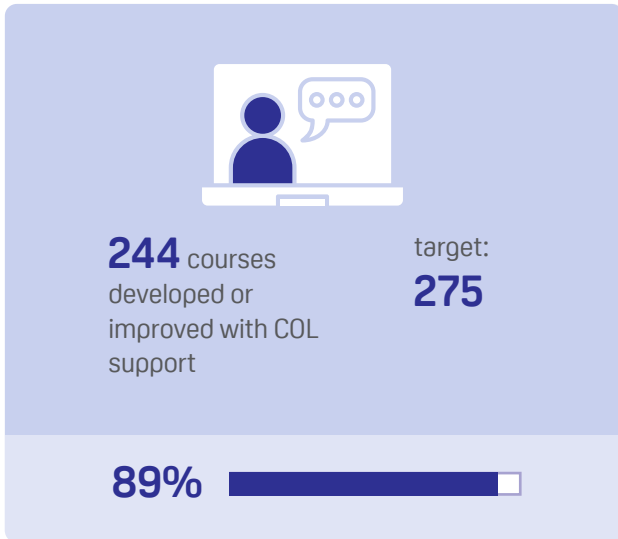


**51** institutional policies/strategies developed

target: **43**

**Exceeded**

### Learning opportunities (courses) developed/improved

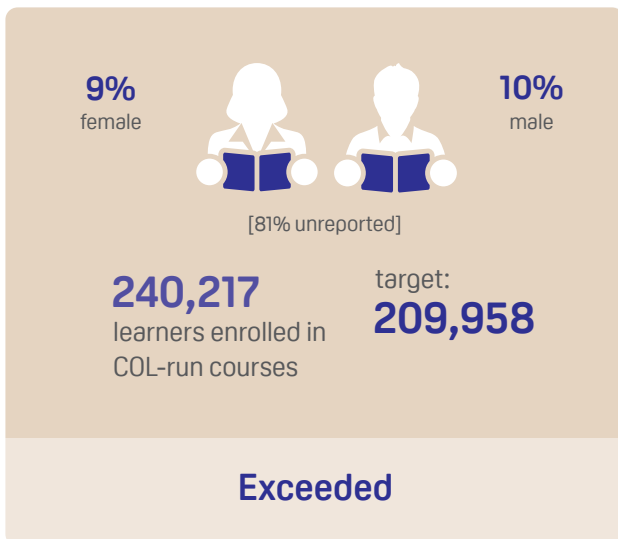


### Learning opportunities (resources) developed/improved



## Improving Lives and Livelihoods

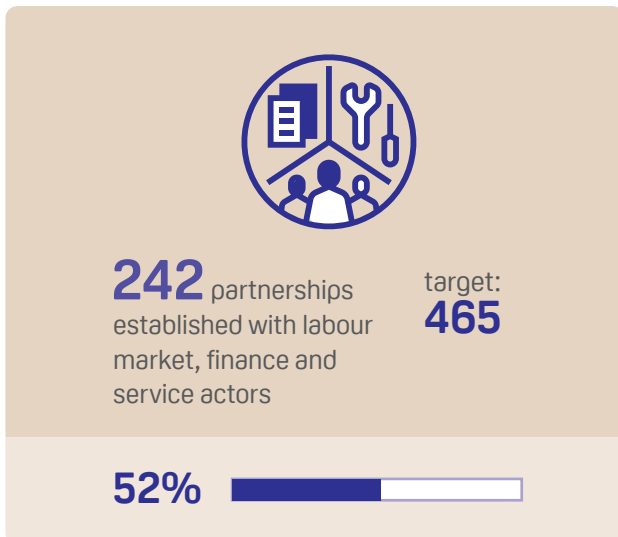
### Gender-responsive learning opportunities developed and offered through ODL



### Learners mentored and linked to services and financial resources



### Partnerships with labour market, finance and service industry established



### Community members sensitised

