



Key Resources



Technology-Enabled Learning Implementation Handbook:

This handbook has been developed to assist educational institutions to adopt appropriate policy, strengthen technology infrastructure, build the capacities of teachers to offer TEL courses, facilitate learners to take advantage of available technology and open educational

resources for learning, and undertake a scholarly approach to the assessment and evaluation of TEL implementation.
<http://hdl.handle.net/11599/2363>



Guide to Blended Learning: The Guide to Blended Learning is an introduction to using technology and distance education teaching strategies with traditional, face-to-face classroom activities. This Guide has been designed to assist teachers adopt blended learning strategies through a step-by-step approach taking constructivist and design-based approach

and reflecting on decisions taken to provide authentic learning experience in their own contexts.
<http://oasis.col.org/handle/11599/3095>



TEL CoP: The TEL Community of Practice website is to assist TEL implementing institutions to network, collaborate and share good practices in integrating technology for teaching and learning. Register at <https://www.telcop.net/>

Benchmarking Toolkit for Technology-Enabled Learning: This toolkit helps educational institutions implementing TEL to assess and benchmark their practices in comparison to other institutions. It provides a framework for self-assessment and reporting based on 10 areas and detailed indicators to measure quality.
<http://oasis.col.org/handle/11599/3217>

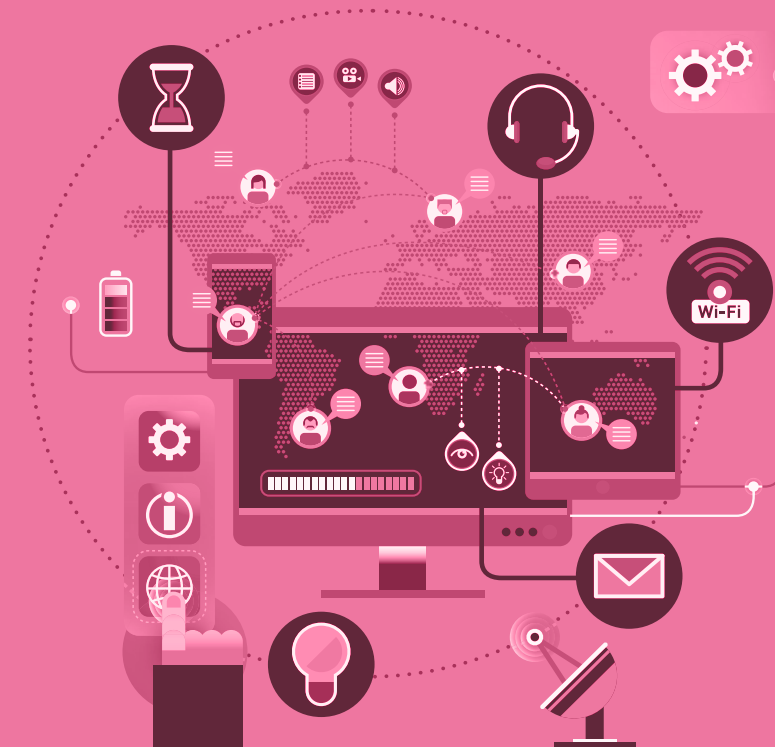


Partner Institutions

Based on the expressions of interest received and COL's available resources in a particular financial year, institutions are selected with due consideration given to regional balance. Since 2015, COL has assisted the following institutions under the TEL implementation project in strengthening integration of ICT in teaching and learning.

- Ahsanullah University of Science & Technology, Bangladesh
- Bangladesh Open University
- Fiji National University
- Jaramogi Oginga Odinga University of Science and Technology, Kenya
- Kaimosi Friends University College, Kenya
- National University of Samoa
- Open University of Tanzania
- Rajiv Gandhi University of Knowledge Technologies, India
- SNTD Women's University, India
- Uganda Management Institute
- Universiti Malaysia Sabah
- University of Papua New Guinea
- University of South Pacific, Fiji

Interested institutions are invited to contact COL to discuss the possibility of receiving support on TEL implementation.



For more information:

Commonwealth of Learning
4710 Kingsway, Suite 2500
Burnaby, BC V5H 4M2 CANADA

Tel: +1 604 775 8200
Fax: +1 604 775 8210
Email: info@col.org
www.col.org

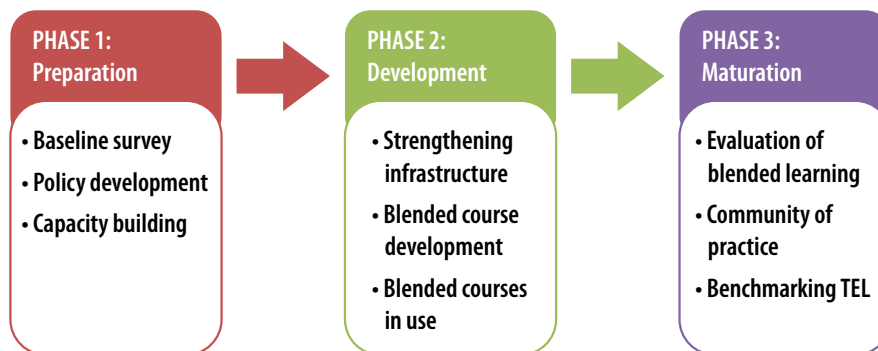
Dr Sanjaya Mishra
Education Specialist, e-Learning

Technology-Enabled Learning Implementation



Activities

TEL implementation in each of the partner institutions starts with an expression of interest from senior management in adopting a systematic approach for the successful implementation of TEL in their respective institutions. To exercise evidence-based decision-making, we adopt a scholarly approach by following a three-phase model of TEL implementation. Phase 1 includes a baseline study of the institution via a survey of ICT use by teachers and students; a Policy Review and Infrastructure Audit (PRIA) of the institution; the development of a draft report and a draft policy for TEL; consultation with institutional stakeholders through a visioning workshop; approval of the policy by the appropriate statutory bodies of the institution; capacity-building for the implementation of TEL; and the development of an implementation plan for two to three years.



In Phase 2, COL provides advice on how to strengthen the infrastructure (the learning management system and open access repositories, in particular) and offers expertise to help build local capacities to use these technologies. The major focus of Phase 2 is institutionalising the TEL policy by developing blended courses and offering them to students. COL supports a blended course development workshop and provides services of a mentor to ensure quality of the courses.

In Phase 3, COL encourages evaluative research in student learning and teacher pedagogical changes, involvement in the TEL Community of Practice and voluntary engagement in benchmarking of TEL.

Key Outputs and Outcomes

Partner institutions that implement TEL using the model can demonstrate the following:

- Availability of baseline reports on student and teacher access to technologies
- Collaborative policy development for TEL
- Evidence of improving student learning
- Improved capacity to offer blended courses
- Faculty engagement in an international Community of Practice
- Benchmarking TEL implementation practice against similar institutions
- Faculty participation in massive open online courses (MOOCs)

Interested institutions are invited to contact COL to discuss the possibility of receiving support on TEL implementation.

Technology-Enabled Learning Implementation

In recognition of the transformative power of information and communication technologies (ICTs) to improve access and increase quality of learning, COL focuses on Policy-Technology-Capacity as a triangle to support implementation of technology-enabled learning (TEL) in educational institutions across the Commonwealth. The appropriate use of any form of technology for teaching and learning, including creating and curating open educational resources (OER), using online and blended learning, mobile devices, massive open online courses (MOOCs), as well as low-cost technologies such as audio, video, radio and TV is key to TEL implementation.

The TEL implementation project assists educational institutions in increasing/improving:

- Number of learners using ICTs;
- Number of teachers using ICTs;
- Availability of courses using ICTs for teaching and learning;
- Student learning through use of ICTs; and
- Access to teaching and learning materials using ICTs.

Capacity Building

In addition to the local capacity-building workshops organised at partner institutions, COL collaborates with Athabasca University, Canada, to offer MOOCs on TEL and blended learning. The MOOCs are designed to help teachers across the Commonwealth strengthen TEL implementation in their institutions. Over 5,000 teachers from 94 countries have already participated in the 'Introduction to Technology-Enabled Learning' course.

