



COMMONWEALTH *of* LEARNING

The Impact of Learning Management Systems in Universities

Dr. Willie Clarke-Okah

Acknowledgements

- Dr Leonie Steyn & Ms Alice Goodwin–Davey, Unisa, South Africa
- Prof Madhulika Kaushik, Wawasan Open University, Malaysia
- Prof Derek Keats, University of Witwatersrand, South Africa
- Dr Sunday Reju, National Open University of Nigeria

This keynote address deals with:

- Issues and challenges
- Benefits and successes
- Failures and pitfalls
- Impacts
- Policy

In ancient times people used computers to send email.



Applications





**I only use
email to
talk to old
people.**

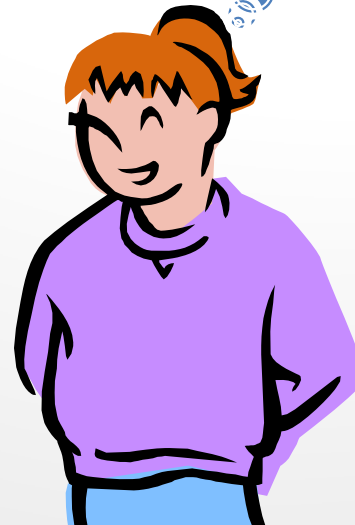
**What's
email?**

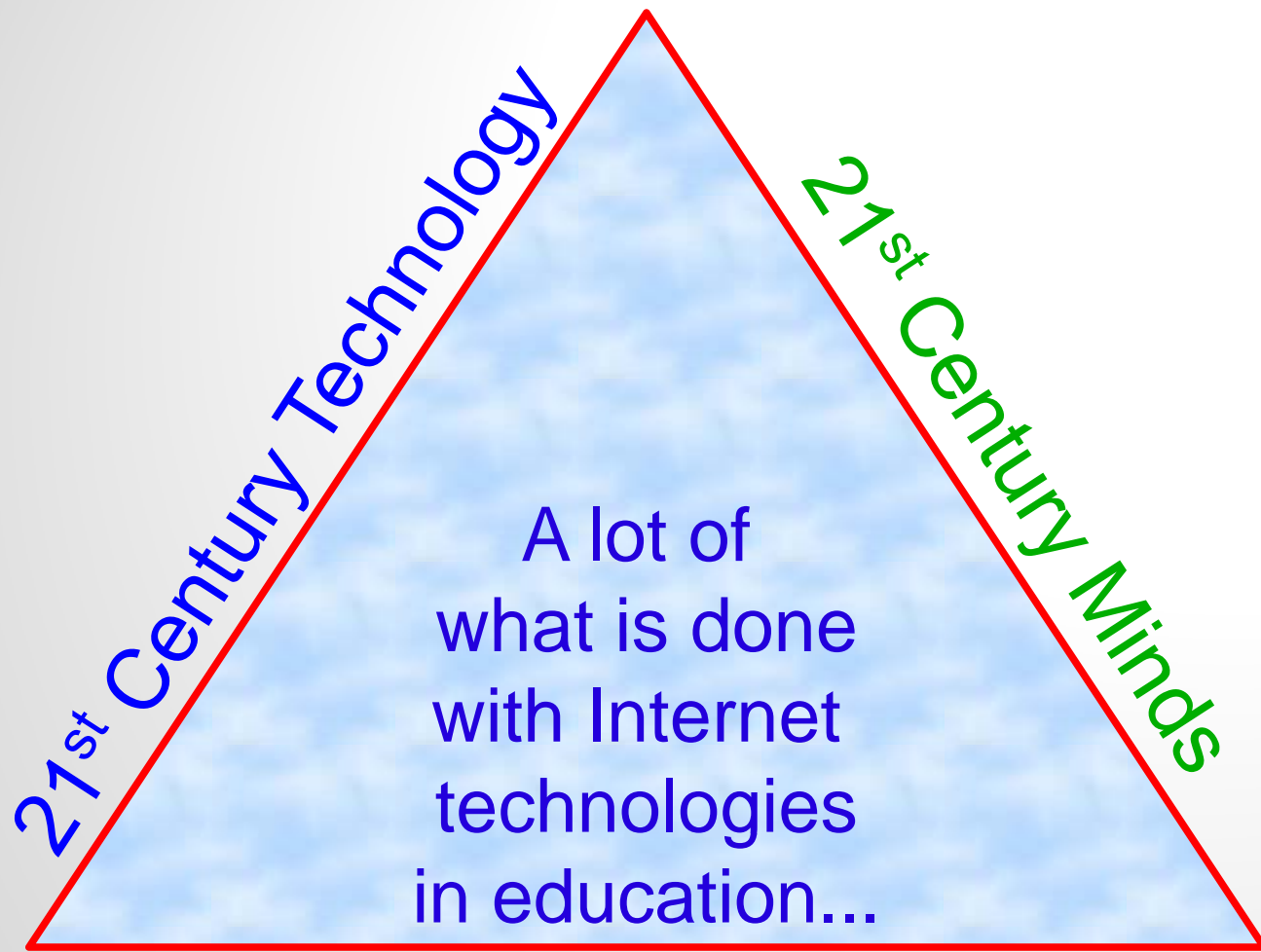


When was the Battle of Hastings?

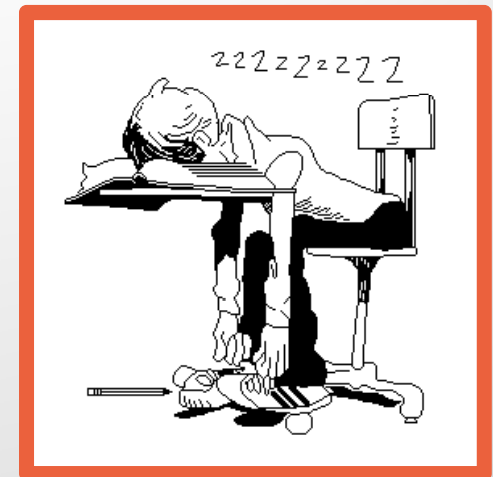


Who cares,
just Google
it!





19th Century Pedagogy



Social Constructivism

- ▶ Culture and context matter
- ▶ Learning – a social and active process
- ▶ Self-governing
- ▶ Problem-solving
- ▶ Collaborative

Connectivism

- ▶ Internet-driven
- ▶ Web-based resources
- ▶ Currency of knowledge
- ▶ Discovery through decision-making

Learning Management Systems

- ▶ Course and student management
- ▶ Management and delivery of learning
- ▶ Admissions
- ▶ Registration
- ▶ Fee payments
- ▶ Etc.

Issues and Challenges

- ▶ Access to learning for students with disabilities
- ▶ Resistance to online teaching
- ▶ Pedagogy

International Accessibility Standards

- ▶ <http://www.w3.org/WAI/> and
- ▶ <http://www.devarticles.com/c/a/HTML/W3C-Web-Standards/>

Desire2Learn

- ▶ <http://www.desire2learn.com/>

Benefits and Successes

- ▶ Managing very large student populations
- ▶ Teacher–student and student–student interaction
- ▶ Performance monitoring
- ▶ Customization
- ▶ Information sharing
- ▶ Assessments and self–assessments

Failures and Pitfalls

- ▶ Not entirely user-friendly
- ▶ LMS not able to “speak” with other systems
- ▶ LMS use inconsistent with internal needs
- ▶ Variation in students’ computer literacy
- ▶ Inability to access the Internet by some students

Impacts

- ▶ Great for administrative services
- ▶ Greater academic control by course coordinators
- ▶ Comparative teacher performance evaluation
- ▶ Higher levels of learner engagement
- ▶ Handling of assignments and feedback
- ▶ Improved learner performance
- ▶ Discussion forums

Policy

- ▶ **Appropriate eLearning policies**
- ▶ **Communication of policy directives**
- ▶ **LMS Vendor engagement**
- ▶ **Tweakability**
- ▶ **Strategically-driven solutions**

Conclusion

- ▶ Equal access to learning for all
- ▶ Content screening
- ▶ Personalized learning
- ▶ 19th or 21st Century pedagogy?
- ▶ Reluctance of teachers to embrace LMS

COL's LMS Evaluation Tool User Guide (August 2004) is also available at:

- ▶ <http://www.col.org/resources/publications/consultancies/Pages/2004-08-evalTool.aspx>

Thank you