



COMMONWEALTH
of LEARNING

Higher
Education

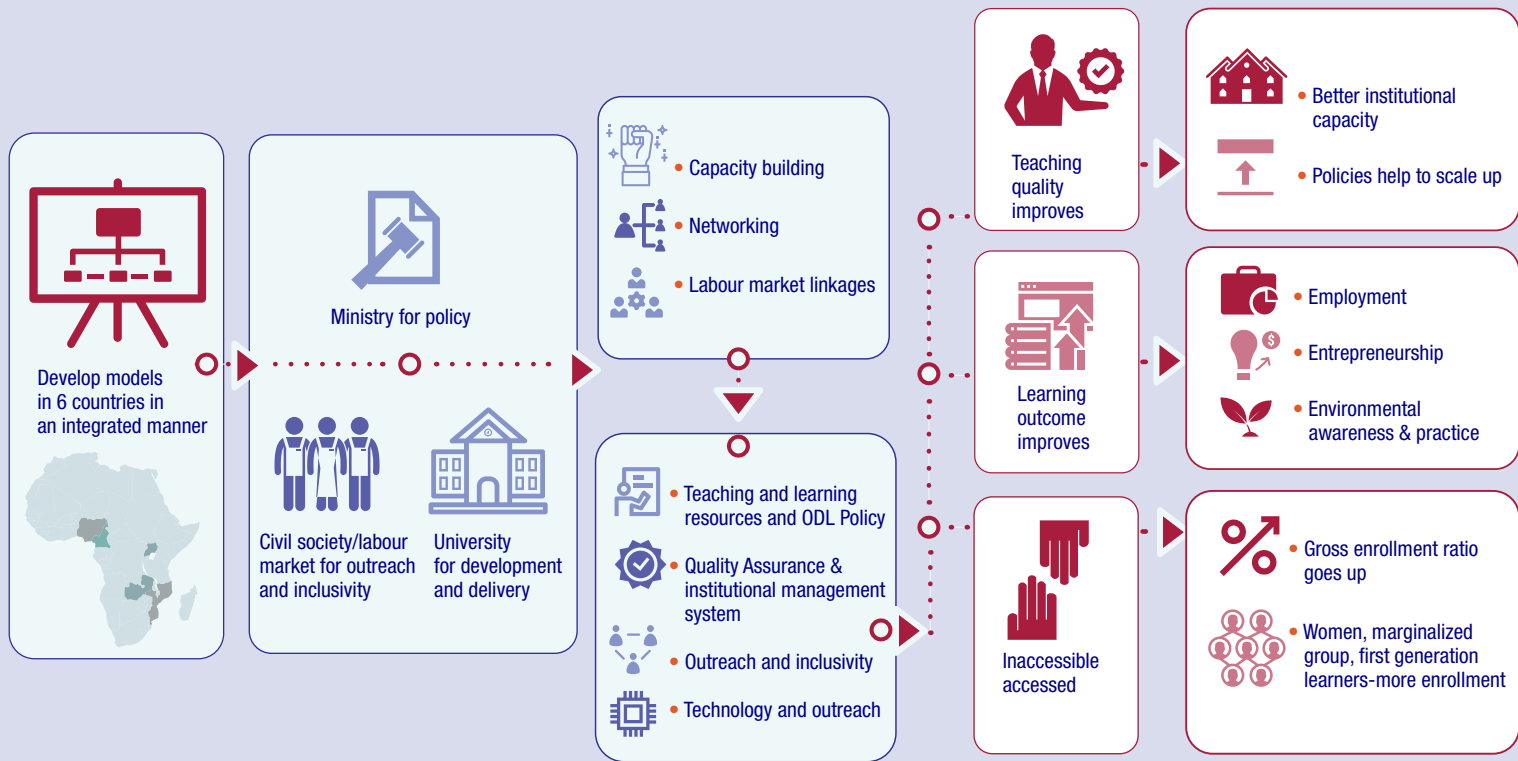


LEARNING FOR SUSTAINABLE DEVELOPMENT



Partner with us on your higher education success

CONCEPTUAL MODEL





Sustainability • Quality • Increasing Access

Higher Education Integrated Model

COL is working with Ministries of Education and HE Institutions to increase access to quality tertiary education and improve the livelihoods of graduates through an integrated, activity-based model. The model includes supporting the development and implementation of the following:

- ODL policies & strategies
- QA systems/QA rubrics/QA audits
- ODL costing models & tools
- Capacity building for blended/online course development & delivery
- Employability mapping
- Use and development of OERs
- Integration of sustainable development concepts
- Gender mainstreaming (including gender-responsive courses)

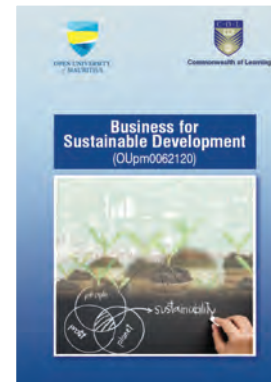
COL is currently piloting the model with institutions in Botswana, Eswatini, Malawi, Mauritius, Namibia, and Zambia.

Regional Community of Practice for Quality Assurance in Open & Distance Learning (ODL) in Southern Africa

The Regional Community of Practice (CoP) brings together professionals in QA from both institutions and national quality assurance bodies in southern African commonwealth states to enhance the quality of ODL in the region. Currently, the CoP includes members from Botswana, Namibia, Lesotho, Eswatini, Malawi, Zambia, and Mauritius. Since the launch in April 2018, the CoP has developed regional QA guidelines, integrated graduate employability as a new component of QA and piloted the guidelines in their respective institutions.

CEMBA/MPA

The Commonwealth Executive Master of Business Administration and Public Administration (CEMBA/MPA) Programme is the outcome of collaboration between COL and partner institutions across the Commonwealth. Our goal is to deliver high quality learning and professional development opportunities. To date, more than 17,000 people have graduated from the programmes. Currently, CEMBA/MPA is offered by 11 partner institutions in the following countries: Malaysia, Sri Lanka, Pakistan, Bangladesh, Jamaica, Guyana, Botswana, Cayman Islands, Ghana, Nigeria, and Mauritius.



COL recently supported the development and delivery of Business for Sustainable Development—a CEMBA/MPA elective produced as an OER by the Open University of Mauritius.



Recent Higher Education Publications

AVAILABLE ON OASIS.COL.ORG



Integrating Employability in Higher Education Institutions (2019)

This brochure introduces the “Employability model” developed by COL’s Higher Education initiative to support universities in assessing readiness, planning, implementing and evaluating employability initiatives.



A Guide to Integrating Employability in Higher Education Institutions (2019)

This guide was designed to support the implementation of COL’s Employability Model in Higher Education institutions and help the development of employability strategies to increase graduate employability.



MOOC: Introduction to Sustainable Development in Business (2019)

This MOOC, developed by the Open University Mauritius and COL, addresses business opportunities in Sustainable Development including sustainable trade opportunities and sustainable production and consumption for developing countries.



Quality Assurance: Good Practices in ODL in Sub-Saharan Africa (2019)

This publication highlights good practices QA in distance and blended learning in Southern African universities. The case studies address the strategies applied to foster quality enhancement and internal quality assurance systems to address quality challenges amidst expansion.